

# ANTHONY JAMES MANSEY

Residential Sales & Lettings



## 540 London Road

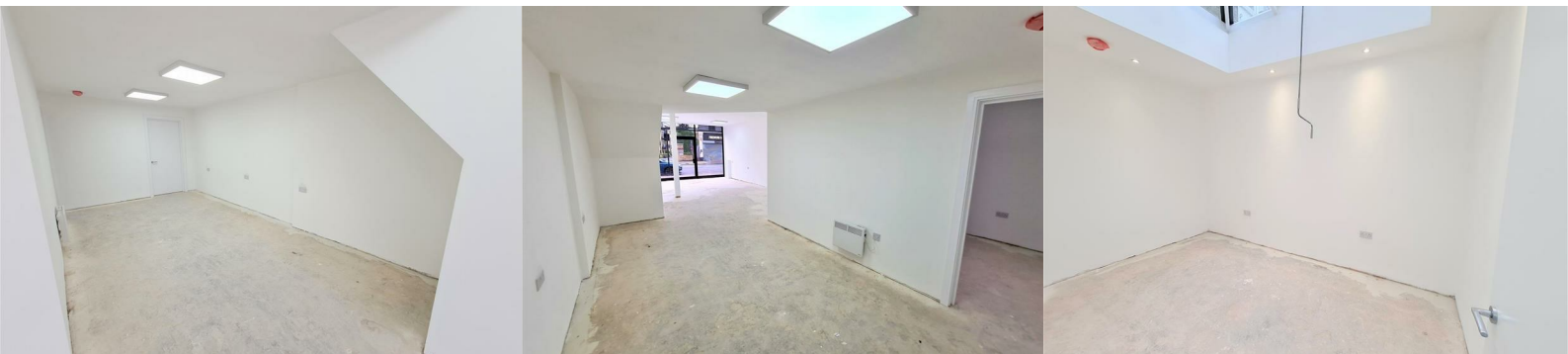
, Isleworth, TW7 4EP

£20,000 Per Annum



The property comprises an open plan shop unit with separate office, kitchen and store  
The property benefits from the following:

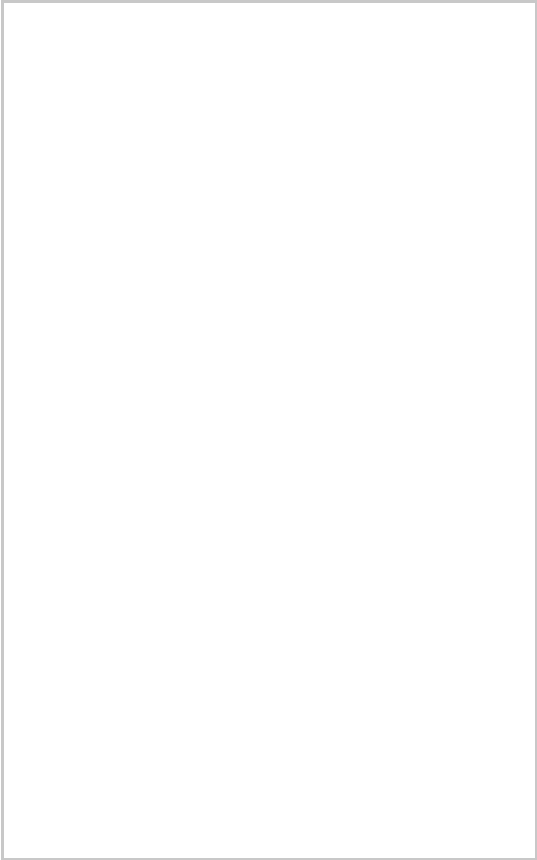
- Aluminium fully glazed shop front.
- Attractive Lantern roofing light
- LED lighting.
- AC heating and cooling cassettes.
- Electric radiators.
- Ample power sockets.
- Fitted kitchen.



## Area Map



## Floor Plans



## Energy Efficiency Graph

Energy Efficiency Rating		Current	Potential
<i>Very energy efficient - lower running costs</i>			
(92 plus) <b>A</b>			
(81-91) <b>B</b>			
(69-80) <b>C</b>			
(55-68) <b>D</b>			
(39-54) <b>E</b>			
(21-38) <b>F</b>			
(1-20) <b>G</b>			
<i>Not energy efficient - higher running costs</i>			
<b>England &amp; Wales</b>		EU Directive 2002/91/EC	

These particulars, whilst believed to be accurate are set out as a general outline only for guidance and do not constitute any part of an offer or contract. Intending purchasers should not rely on them as statements of representation of fact, but must satisfy themselves by inspection or otherwise as to their accuracy. No person in this firm's employment has the authority to make or give any representation or warranty in respect of the property.